



Lunch Time Learning Bites

KOMP Test of Change

Angus Health & Social Care Partnership

Introduction to KOMP

- Specifically designed for those with a cognitive impairment or lack of ability to manage normal social media platforms.
- Enables 1:1 video calls
- Photos can be uploaded and displayed permanently on a moving carousel.
- Text messages can be sent to the screen.
- Simple large video screen that allows for clarity of video calling, crucial for sight impaired users.



KOMP

Clear audio connection –sound is loud and clear .

Screen has a high contrast ratio and large text.

Has an alert chime that counts down from 10 seconds before connecting, letting the user know that a call is coming.

No touch screen and is operated by a single button.

Simple to use, no interaction required apart from switching on/off if necessary.



KOMP

Access for family, friends and professionals possible

Security system keeps professional and personal contacts separate.

Unknown callers cannot access as all callers must be invited by a trusted family member first.

Simple to use, no interaction required apart from switching on/off if necessary.



Why KOMP Test of Change?

Anxiety level increases due to lock down, resulting in increased calls to emergency services, GP's and Community Alarm Receiving Centre.

GP's reporting mental health and functional deterioration in patients who have been under strict lockdown.

Uncertainty of when Day Care and other support groups would re-start

Lack of social stimulation for dementia patients contributing to a deterioration in cognitive functioning and capabilities.

Why KOMP Test of Change

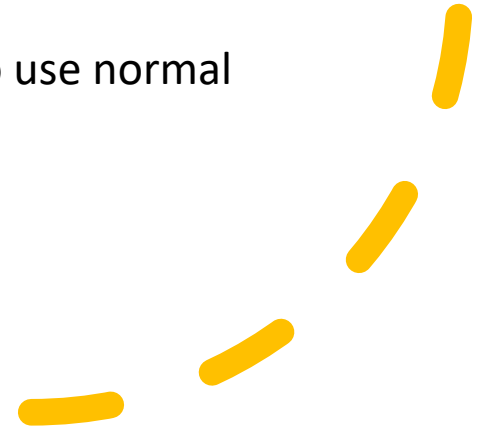
Available technologies would require some form of interaction in order to access/operate.

Client/group that were either unable to use these technologies, understand how to access them or refused to engage with proactive phone calls were being socially excluded.

Looked at other technologies available and decided that the KOMP unit best met our needs.

Test of Change – Steps Taken

- Consultation with potential partners – CMHT teams, Falls Service, Older People teams, Physiotherapy, Post Diagnostic Dementia Service, MacMillan Service, Occupational Therapists (ERT) and Kirrie Connections Community Hub
- Set criteria
 - ❖ Those living alone/socially isolated
 - ❖ Lack ability to use normal technology
 - ❖ Support required due to concerns raised by case holder
 - ❖ Experiencing anxiety or mental health deterioration due to social isolation.
 - ❖ Falls/or long term condition rehabilitation requiring specialist input.
 - ❖ Carers support for those who are unable to use normal technology.



TOC – Steps Taken

- Agreed 3 month loan period for applicants
- Discussion on evaluation/outcome measurement tools
- Outcome method collation would be decided by the applicant depending on expected outcomes but could include-

CMH Wellbeing Web

Barthel Index measurements

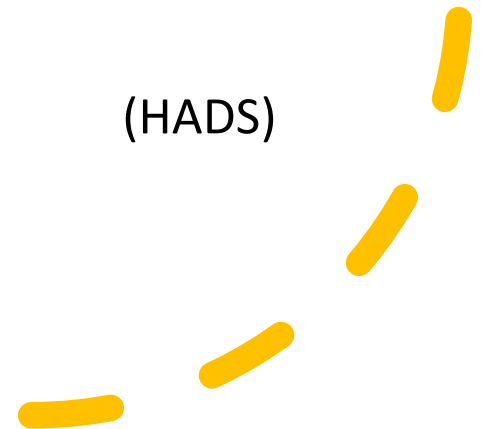
Domestic ADL Scale

Lawton Assessments

Verbal feedback from family

Hospital Anxiety and Depression Scale (HADS)

Direct questionnaire to users.



Outcomes



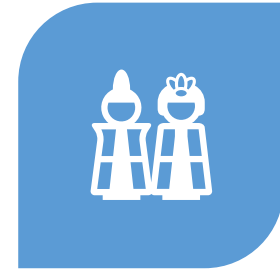
15 REFERRALS
RECEIVED



11 OUTCOMES
ACHIEVED



80% INCREASE IN
WELLBEING RECORDED



AROUND 50% WENT
ON TO PURCHASE THE
KOMP THEMSELVES.

Learning

Signal connectivity issues, can be linked via broadband

Audio is clear, however not designed for hearing deficiency

Not for those with dementia like illness who are far advanced.

Online support only covers Monday – Friday – no OOH's cover



ANY QUESTIONS?